

„With Mindbreeze our employees can access all relevant information from all the connected data sources with one single search query at a glance. The easy-to-use, intuitive user interface does not require any training. All our employees were able to start using the product as soon as we went live.“

# Find all relevant information – anytime and anywhere

## Umdasch Group, Austria

The Umdasch Group is a global company with approximately 7,200 employees across 180 sales and logistics offices in 65 countries. Working on such an international scale makes it imperative to have quick and easy access to relevant information, wherever you are and whenever you need it.

### Task

The Umdasch Group's data is stored in three data pots (Microsoft SharePoint 2013, EMC Documentum, file system). In order to make it easier for employees to find saved content (structured and unstructured) in these data sources, the Umdasch Group were looking for an enterprise search solution with the aim of achieving added business value by connecting information. Among others Umdasch evaluated the search with Microsoft SharePoint 2013. This "initial" solution approach was stopped after four months in the development phase as both the projected timeframe and project costs were exceeded. Management therefore decided to identify an alternative search solution – if possible from a European provider.

## Overview

### Customer

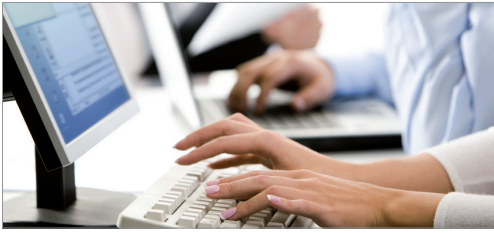
The Umdasch Group is a globally active company, whose sister companies the Doka Group (concrete formwork technology) and Umdasch Shopfitting Group (store design and interior architecture) are market leaders in their respective fields. [www.umdasch.com](http://www.umdasch.com)

### Solution

Mindbreeze InSpire – the combination of hardware (server) and pre-installed Mindbreeze software offers an instantly implementable, secure, company-wide information search solution with minimum configuration and installation effort.

# Chronology

## Determining the requirements



## Go-live after one month



## Installation and configuration of Mindbreeze InSpire



## Facts and Functionalities

- 7,200 employees
- Go-live after just one month
- More than 5 million documents from different data sources
- 15 content types
- Integration of Mindbreeze widgets using web parts in Microsoft SharePoint

## Solution

The decision fell in favour of the appliance solution Mindbreeze InSpire. Employees find all relevant information from all the connected data sources with just one search query – directly in the Microsoft SharePoint Enterprise Portal, since the solution is fully integrated into Microsoft SharePoint using web parts. Access rights are adopted directly from the data source and checked during each search query.

## Implementation

Together with the Umdasch team Mindbreeze set up a try & buy program to test the solution's functions with real data. Mindbreeze InSpire is delivered to the customer as a pre-configured appliance box and is quickly integrated into the existing infrastructure. After three days the first search queries could be made and the results examined.

With data from the real system the search tabs were configured and the filters (date, author etc.) optimised to further refine the search. An extremely short test phase was enough for Mindbreeze to demonstrate the advantages of the solution.

Once the Umdasch Group opted for Mindbreeze InSpire the solution went live within a month (target set by management). This was possible – the Mindbreeze InSpire box from the try & buy phase along with the configurations were easily transferred to the live environment.

## Objective Met

The introduction and integration in the existing Microsoft SharePoint portal took place smoothly. Approximately five million documents from three data sources were searched through and their content indexed. This gives Umdasch Group employees an easy-to-use and efficient search tool. With just one search query all relevant information is displayed along with their semantic correlations. The value of the search solution was instantly clear to see.